

CIS

Contractors & Industrial Supply Co., Inc.
Electrode Handling Division

1241 Foster Avenue

Nashville, TN 37210 USA

Phone: (615)256-8658 Fax: (615) 256-1367

Email: sales@cisrigging.com

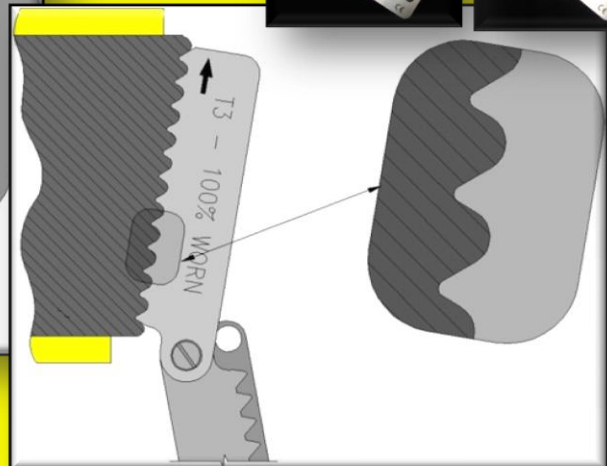
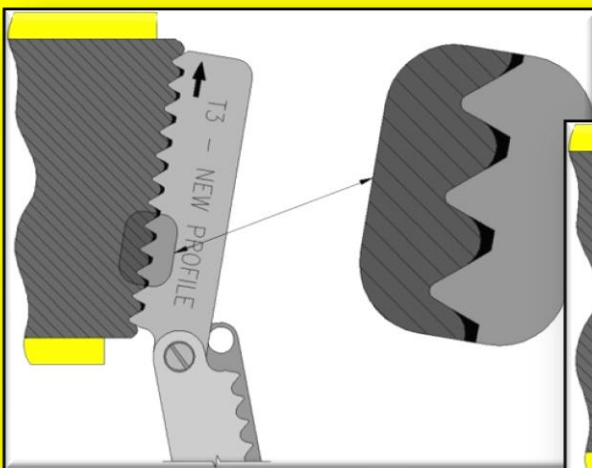
Web: www.electrode-handling.com

NEW!

Thread Wear “Pocket” Gage

The “Pocket” Thread Wear Gage is a compact, easy to use device designed with the mill worker in mind to satisfy the “every lift inspection” as outlined by ASME B30.20. It collapses in a pocket knife fashion, and includes a designated hole for a karabiner or similar device. This gage includes two separate profiles for reference:

- 1) The “New Profile” exemplifies the thread when the plug is purchased new. This gives the inspector an idea of the amount of wear the plug has endured so far during its service life.
- 2) The “100% Worn” profile is used to determine whether or not the plug is fit to stay in service. This “100% Worn” is the maximum allowance as determined by ASME and OSHA standards and requires that the plug be removed from service when this profile is met.



Certified Member



Compliant Products